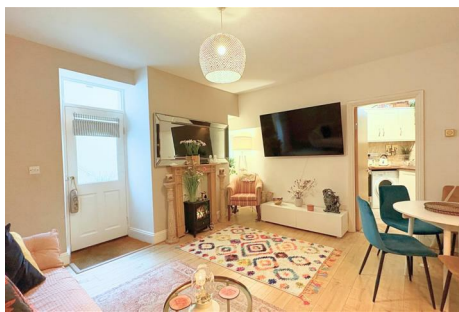


DANIEL BUTTERWORTH

LETTINGS & PROPERTY MANAGEMENT



10 Trinity Mews Meadfoot Lane , Torquay, TQ1 2BW

Perfectly positioned just moments from the vibrant Torquay Harbourside, this charming ground-floor apartment offers the ideal blend of convenience and coastal living. The well-presented accommodation features a spacious living/dining room, a separate kitchen, and two generous double bedrooms. A real rarity for such a central location is the private, secluded courtyard garden—a peaceful outdoor retreat.

£1,200 Per month

10 Trinity Mews Meadfoot Lane

, Torquay, TQ1 2BW



- Garden Flat
- 2 Bedrooms
- Close to Harbour
- Courtyard Garden
- Gas Central Heating

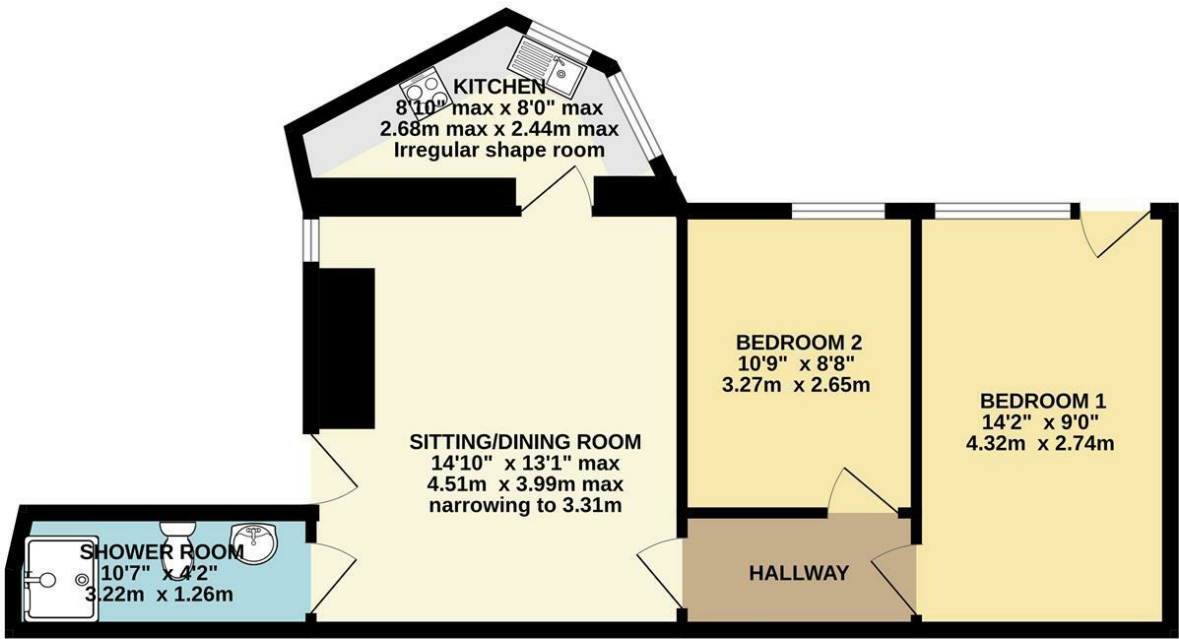


[Directions](#)



Floor Plan

GROUND FLOOR



Whilst every attempt has been made to ensure the accuracy of the floorplan contained here, measurements of doors, windows, rooms and any other items are approximate and no responsibility is taken for any error, omission or mis-statement. This plan is for illustrative purposes only and should be used as such by any prospective purchaser. The services, systems and appliances shown have not been tested and no guarantee as to their operability or efficiency can be given.
Made with Metropix ©2026

These particulars, whilst believed to be accurate are set out as a general outline only for guidance and do not constitute any part of an offer or contract. Intending purchasers should not rely on them as statements of representation of fact, but must satisfy themselves by inspection or otherwise as to their accuracy. No person in this firms employment has the authority to make or give any representation or warranty in respect of the property.

Energy Efficiency Rating		
	Current	Potential
Very energy efficient - lower running costs		
(92 plus) A		
(81-91) B		
(69-80) C		
(55-68) D		
(39-54) E		
(21-38) F		
(1-20) G		
Not energy efficient - higher running costs		
England & Wales		EU Directive 2002/91/EC